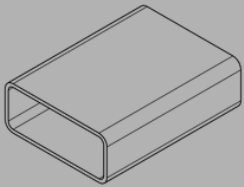
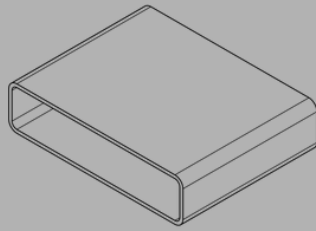


# ALUMINATE FENCING

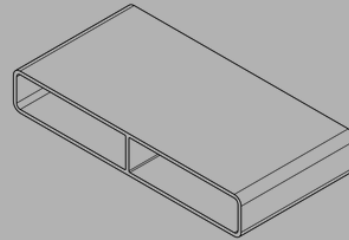
# ALUMINATE FENCING



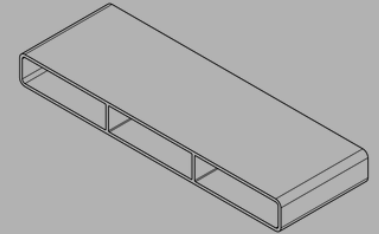
**38MM SOLID SLAT**



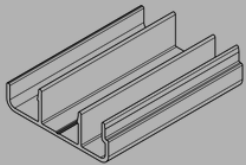
**65MM SOLID SLAT**



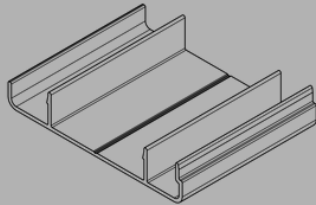
**100MM SOLID SLAT**



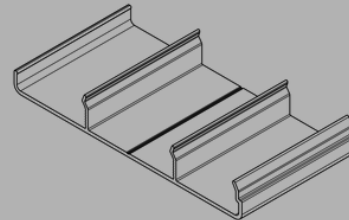
**150MM SOLID SLAT**



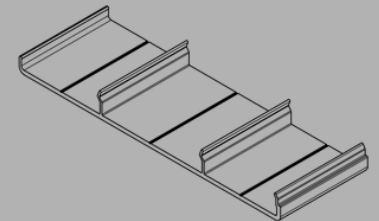
**38MM HALF SLAT**



**65MM HALF SLAT**

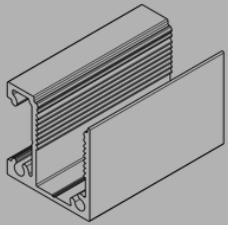


**100MM HALF SLAT**

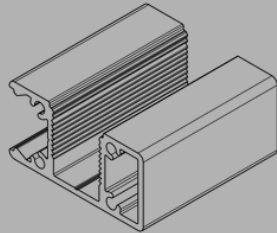


**150MM HALF SLAT**

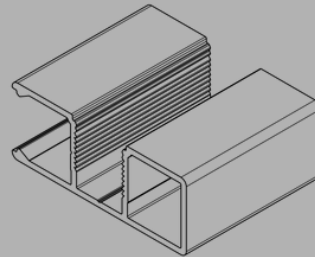
# ALUMINATE FENCING



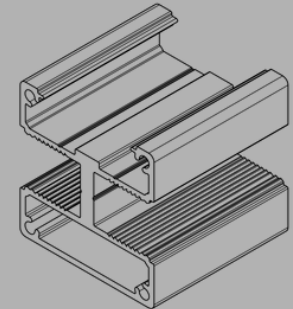
30X30 CHANNEL



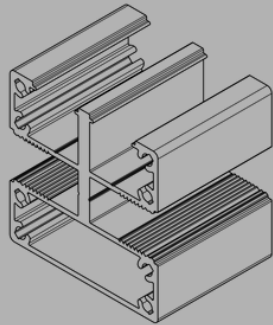
50X25 ONE WAY



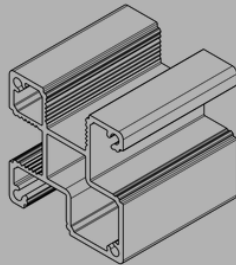
65X25 ONE WAY



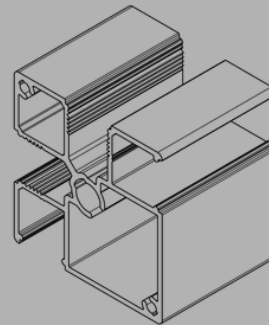
50X50 TWO WAY



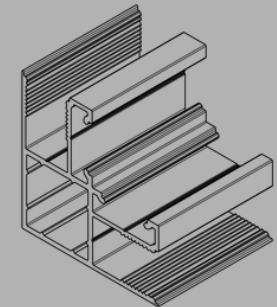
65X65 TWO WAY



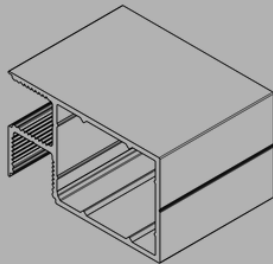
50MM CORNER POST



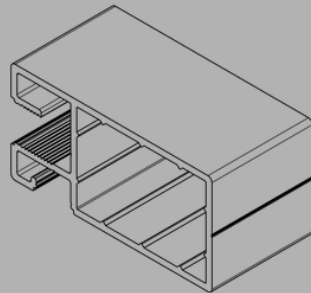
EXT FIX CORNER POST



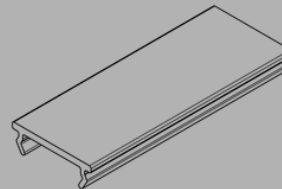
INT FIX POST



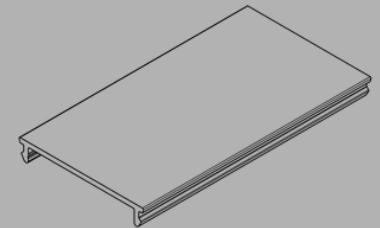
66X40 GATE FRAME



100X50 GATE FRAME



SMALL INFILL



LARGE INFILL